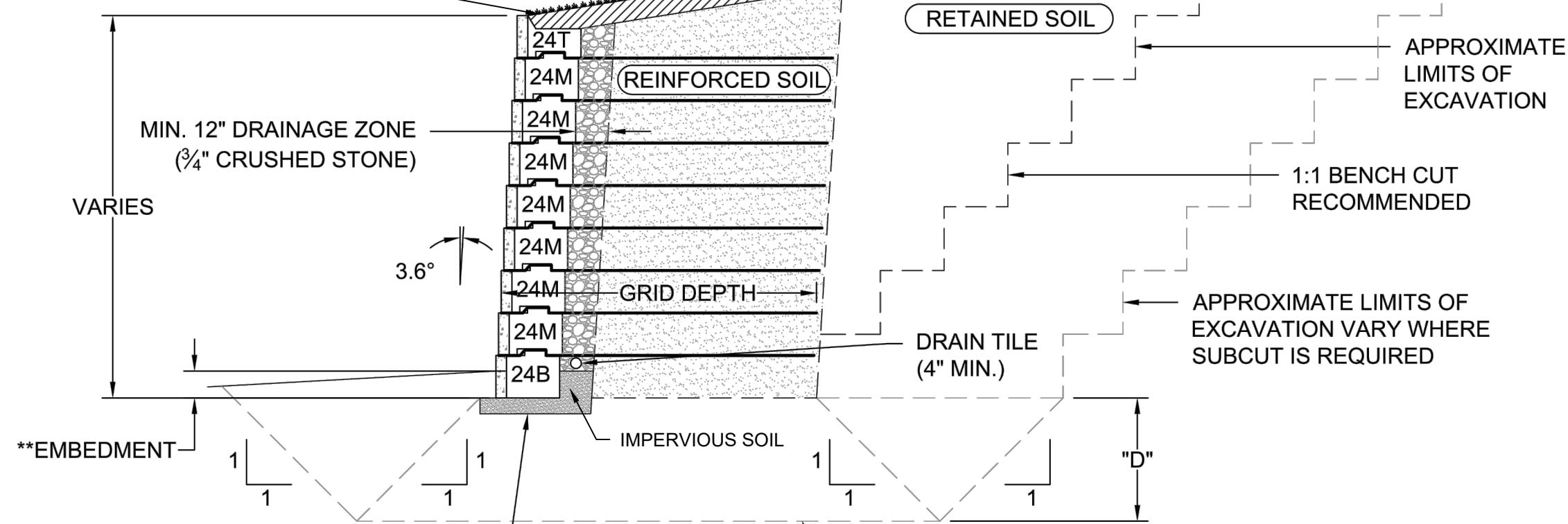
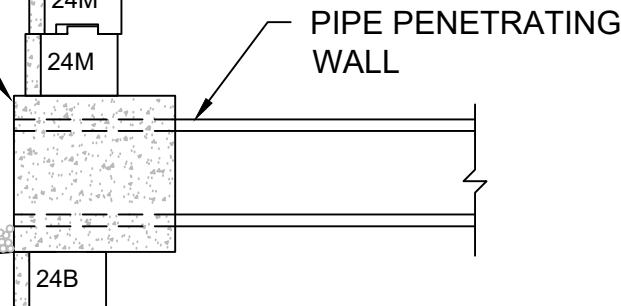


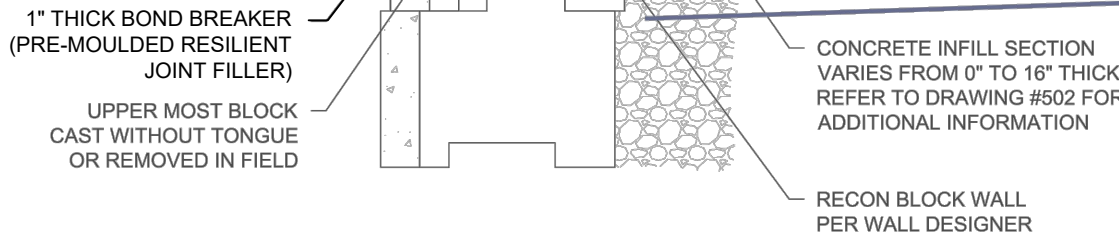
## WALL SECTION



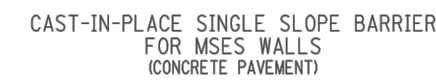
SUBCUT TO A DEPTH "D" AS REQUIRED AND REPLACE WITH SUITABLE COMPACTED STRUCTURAL FILL TO ACHIEVE THE REQUIRED BEARING CAPACITY AND SLIDING RESISTANCE AS DIRECTED BY THE SITE GEOTECHNICAL ENGINEER. ALL STRUCTURAL FILL SHALL BE COMPACTED TO A MIN. 95% STANDARD PROCTOR DENSITY.



N.T.S.




N.T.S.



### TRAFFIC BARRIER AND MOMENT SLAB NOTES

1. MINIMUM TOTAL LENGTH OF BARRIER MOMENT SLAB IS 20 FT., WHEN PINNED TO AN ADJACENT SLAB; 30 FT., WHEN PLACED UNDER ASPHALT.
2. PLACE EXPANSION JOINTS IN BARRIER TO MATCH WITH PAVEMENT JOINTS. DO NOT LOCATE THE BARRIER EXPANSION JOINT WITHIN 6 FT. FROM CENTERLINE OF LIGHT POLE OR 2 FT. FROM CENTERLINE OF JOINT BOX.
3. HIGHWAY JOINT SEALANT - ASTM D6660, TYPE II APPEARING ON THE DEPARTMENT'S APPROVED LIST.
4. EPOXY REINFORCING BARS SHOWN FOR ILLUSTRATIVE PURPOSES. OTHER CORROSION PROTECTION METHODS ACCEPTABLE.

DESIGNER NOTES:  
THE DESIGNER SHALL DETAIL THE TRANSVERSE  
AND LONGITUDINAL DOBEL CONNECTIONS OR  
REFERENCE THE APPROPRIATE HIGHWAY  
STANDARD SHEETS.  
STYROFOAM MAY BE REMOVED AT THE  
DESIGNERS DISCRETION.  
THE MOMENT SLAB HAS BEEN DESIGNED TO  
MEET TL-4 REQUIREMENTS.

<p>NOTES ON THE DRAWINGS LABELED AS "NOT TO SCALE" ARE INTENTIONALLY DRAWN NOT TO SCALE FOR VISUAL CLARITY. ALL OTHER DETAILS, FOR WHICH NO SCALE IS SHOWN, ARE DRAWN PROPORTIONAL, AND ARE FULLY DIMENSIONED.</p>	
<p>ISSUED 5/31/08</p>  <p>REVISED</p>	<p>STATE OF NEW YORK DEPARTMENT OF TRANSPORTATION OFFICE OF STRUCTURES</p> <p>CAST-IN-PLACE SINGLE SLOPE BARRIER (BITUMINOUS &amp; CONCRETE SHOULDER)</p>
<p>APPROVED 1/18/09 FOR THE DESIGN, STORED BY GEORGE A. CHRISTIAN, P.E. (DEPUTY DIST. ENGINEER STRUCTURES)</p>	<p>ISSUED UNDER ED 00-002 EFFECTIVE WITH THE LETTING OF 1/08/09</p>

© SESI CONSULTING ENGINEERS 2021  
This drawing and all information contained here on is proprietary information of SESI CONSULTING ENGINEERS and may not be copied or reproduced, either in whole or in part, by any method, without written permission of SESI CONSULTING ENGINEERS.